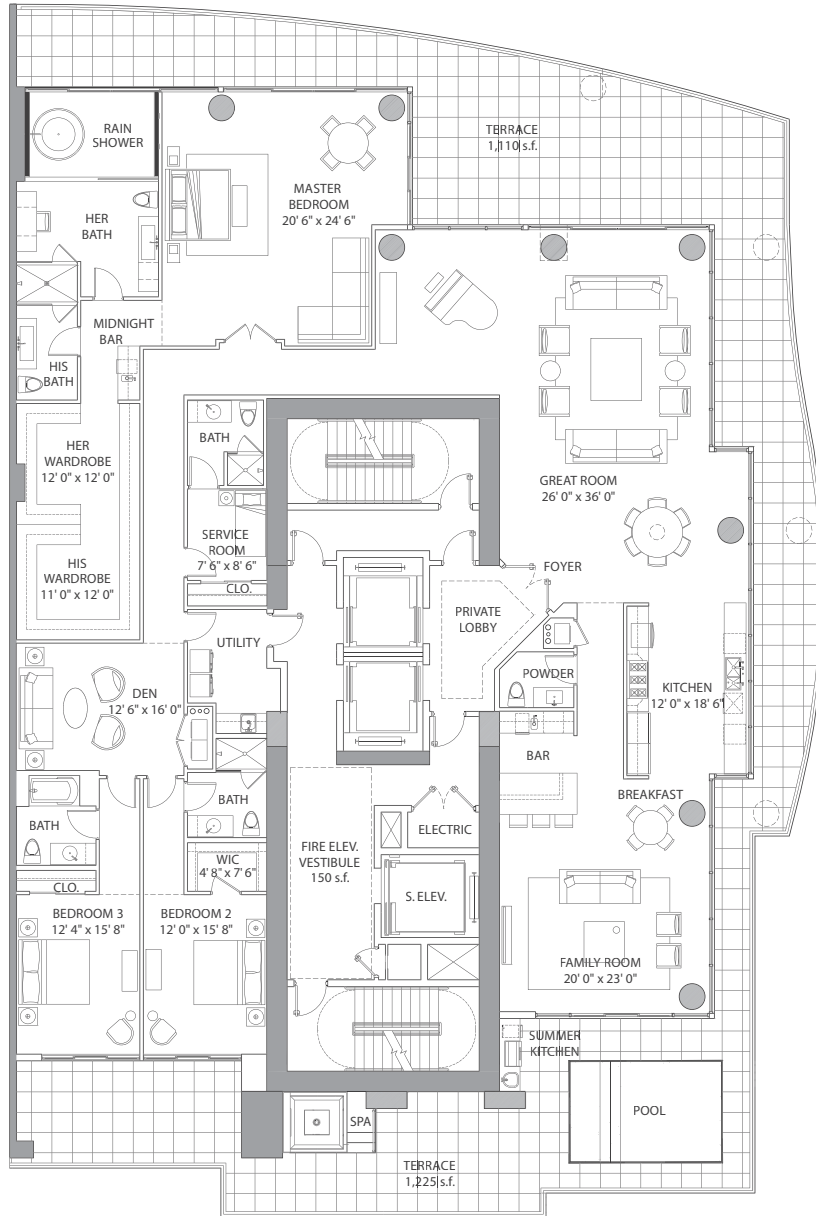


CASA DI BOTTICELLI  
888 VIA ACQUALINA

THREE BEDROOMS | FIVE & ONE-HALF BATHS | GREAT ROOM | FAMILY ROOM | BREAKFAST AREA  
SERVICE ROOM | POOL | SPA | SUMMER KITCHEN



ENCLOSED AREA:	5,096 sq ft / 4731 m <sup>2</sup>
TERRACE AREA:	2,321 sq ft / 216 m <sup>2</sup>
TOTAL AREA:	7,417 sq ft / 689 m <sup>2</sup>
PAINT TO PAINT: RESIDENCE: 4,994 sq ft / 565 m <sup>2</sup>	



KEYPLAN / SCALE: 3/16" = 1'  
N

Items depicted on the Floor Plan are conceptual only and are for the convenience of reference. They should not be relied upon as representations, express or implied, of the final details of the Unit. The Developer reserves the right to make modifications, revisions and changes it deems desirable in its sole and absolute discretion. All depictions of appliances, counters, soffits, floor coverings and other matters of detail are conceptual only and are not necessarily included in each Unit or, if included, are not necessarily intended to be of the size, shape or location indicated. Consult your Purchase Agreement and the Prospectus for the items included with the Unit. Dimensions and square footages are approximate, are subject to change in accordance with your Purchase Agreement, and may vary with actual construction. Given the nature of condominium ownership, the Unit boundaries are precisely defined in such a manner so that all components of the Building which are (or are potentially) utilized either by other Units or the Common Elements are excluded from the Unit. This would exclude, for instance, all structural walls, columns, etc. and essentially limits the Unit boundaries to the interior airspace between the perimeter walls and excludes all interior structural components. For the precise Unit boundaries, see Section 3.2 of the Declaration. For your reference, the area of the Unit, determined in accordance with these defined Unit boundaries, is set forth hereon (and labeled as "Unit Area"). Please note that the unique way of defining the boundaries actually makes the Unit appear to be smaller than it actually would be if standard architectural measuring techniques were used. Typically, apartments are measured to the exterior boundaries of the exterior walls and to the centerline of the interior demising walls, without excluding areas that may be occupied by columns or other structural components. The area, if calculated based upon standard architectural measuring techniques, is also set forth hereon (and labeled as "Typical Area"). The Typical Area is provided solely to establish a frame of reference and is not intended to suggest that the actual Unit is that size. In fact, as set forth above, many of the components included in determining the Typical Area, are Common Elements that are not exclusively owned.